

407 | **PANACEA**



**intrepid**  
— POWERBOATS —

ONE OF A KIND. ONE AT A TIME.







- THE 407 PANACEA -

---

WHEN *you* COMPROMISE NOTHING,  
*you can* ACHIEVE EVERYTHING.

---

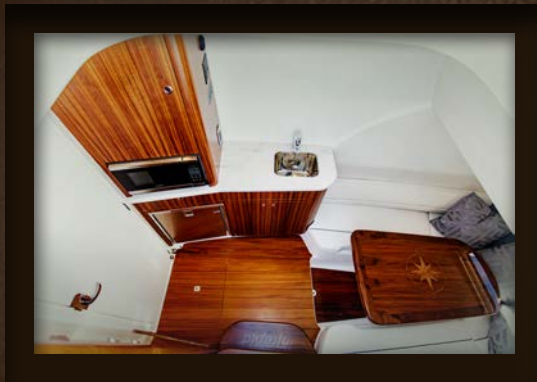
There are those who will say you can't have it all. To those naysayers we present a powerful argument to that notion in the form a magnificently crafted 40-foot boat. The 407 Panacea was designed to satisfy every desire a boater can imagine. That happens when you see to every detail with unparalleled precision. It's the ultimate day boat that's also a stay boat without compromising fishability. It features an impressively large cabin without compromising cockpit space. It's pure luxury without compromising offshore performance. Because absolutely nothing was overlooked.



## *you eventually you*

The 407 Panacea is the perfectly sized center console our customers were asking for. 72-square feet of cabin space make it impressively large for a center console and is the most spacious one you'll find in any 40-foot center console. We incorporated a host of skylights to give it a light

and airy feel as natural light streams in across the luxurious appointments such as real wood veneers, solid surface countertops, lots of storage, a separate head with shower and a galley featuring a sink, microwave and a pull-out refrigerator.



► A large settee area with an electrically actuating table that goes all the way down creates a filler for an added berth.



► Our customers asked for a separate head with shower in the cabin and we delivered.



► Light and airy, the cabin is the most spacious one you'll find in any 40-foot center console.



► Perfection is a state of mind. And no matter where you navigate your 407 Panacea, you will arrive there.







# A POWERFUL DOSE *of sheer*, UNADULTERATED PERFORMANCE.

Fish. Dive. Entertain. You can do it all aboard the 407 Panacea in sheer elegance, style and comfort. But not at the expense of performance. It features standard triple engines and a deep V, step-bottom, vented hull that produces better lift, improved fuel economy, faster speeds and, rest assured, even

the roughest waters will be handled with ease. In the cockpit, we went to great lengths to ensure the ergonomics of the helm station provided great visibility and line of sight. There's also plenty of room for electronics and a multitude of options for seating sure to impress any discerning helmsman.







► The fully supported and resin-infused fiberglass T-Top, an Intrepid first, eliminates any windshield mullions and provides a wide open view. Seating is available in a multitude of options including a racing bolster (pictured above) that inspires confidence while insulating you with optimum comfort at any speed.



► Engine configuration can include twins, triples or quads of any brand you wish. Whichever you choose, you'll experience unprecedented stability and performance at any speed.







**"Problem-solving leaders have one thing in common:  
a faith that there's always a better way." ~Gerald M. Weinberg**



# FORM, FUNCTION *and* AESTHETICS TRAVEL PERFECTLY *together*.

One of the most impressive things about the 407 Panacea is the amount of space we were able to create. The forward bow seating allows 9 passengers to sit comfortably for cruising and also includes electric backrests on both port and starboard seating. An electric table can be raised for

entertaining or lowered to create even more lounging space with our custom-fitted sunpad. Both port and starboard loungers raise to reveal just some of the incredible storage space offered. And in the ever-spacious aft cockpit of the boat, the rear folding seat easily stows away for fishing.



► The Helm Seat Station is designed for grilling, entertaining or filleting fish. Complete with an optional fresh water sink, electric grill, tackle box drawers, icemaker, refrigerator and a Frigid Rigid™ pull-out cooler.



► A sun lounger with an electric backrest adjusts to any angle for ultimate comfort and inspires conversation amongst passengers in the bow seating area.



Our latest dive door features a swing-in door and our patented fold-out ladder for easy access in and out of the water.



► The 52-square foot aft cockpit includes a transom area with two 50-gallon live bait wells and the most comfortable folding rear seat found in a 40-foot boat.



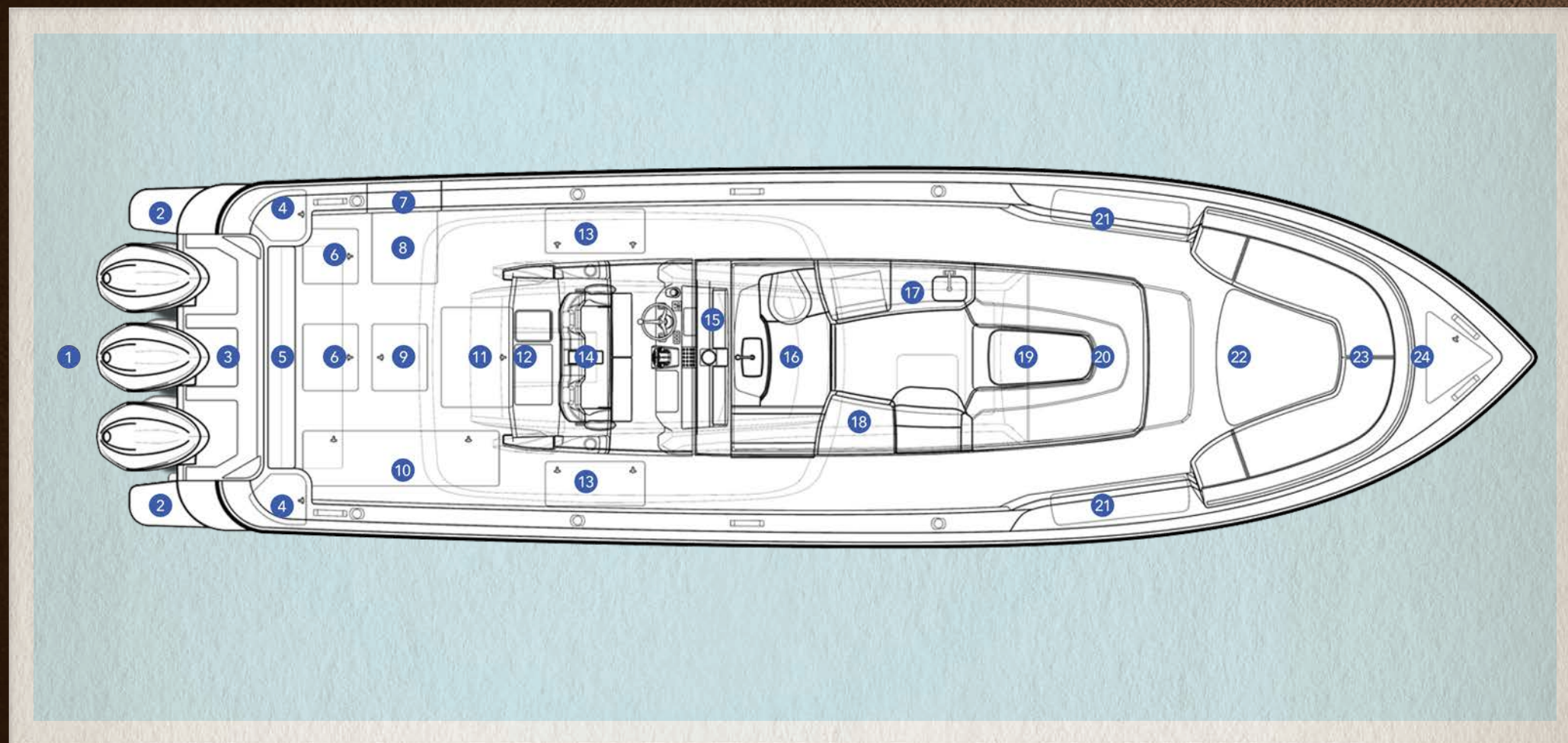
► Deep forward bow seating provides a much safer and more comfortable ride.







THE 407 PANACEA *is a* SOLVE ALL *for the* MANY DESIRES BOATERS *had.*  
HERE'S *the* CLIFF NOTES.

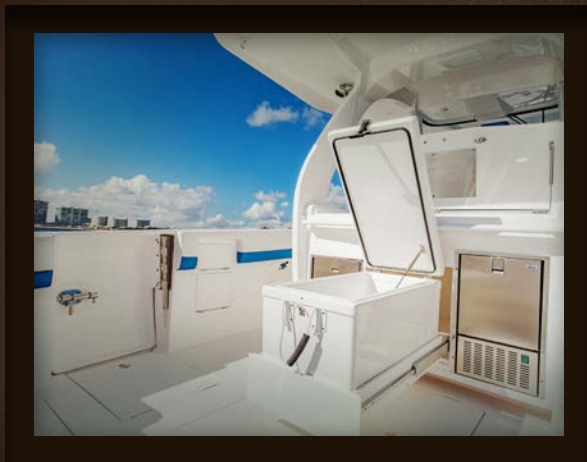




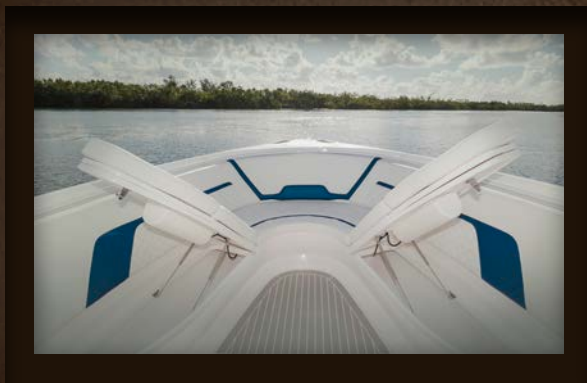
1. Triple and Twin engine configurations maximize aft cockpit space, as opposed to the space lost with traditional inboard applications. Quad transom configuration available.
2. Standard dual dive platforms with a boarding ladder. This fulfills the "means of solo re-boarding" which is a recommendation of the American Boat and Yacht Council; a safety essential other builders forego.
3. Convenient service platform with integrated steps in front of engines makes maintenance quick and simple.
4. Port and Starboard aft above deck storage or optional rigged baitwells with windows makes fishing this aft cockpit more convenient and roomy by not stealing valuable cockpit space.
5. The optional integrated folding rear seat is comfortable and convenient. It easily folds away and disappears when it's time to fight some fish in the aft cockpit.
6. Mechanical access hatches to all transom rigging, pumps, etc.
7. Hull side dive door, an Intrepid trademark, with our latest lift up/rotate design that doesn't take up valuable cockpit space while in the open position. And, it also allows for easy dockside boarding.
8. Fold-out ladder conveniently stows under the cabin sole and when deployed it allows for easy entry and exit from the water in through the hull side dive door.
9. Access hatch to cockpit sole baitwell/storage.
10. Access to foam insulated fish box/storage.
11. Large access to the generator for easy maintenance.
12. Aft cockpit cabinet designed to your needs. A).Refrigerator/Icemaker/grill/sink/slide out cooler B). Fishing station C). Delete for second row seating.
13. Easy access battery compartments.
14. From electric bench seats, individual Captain's chairs, to racing bolsters, we've got you covered.
15. The all new full windshield console gives you maximum protection from wind and rain and makes space for even the largest of electronics.
16. Separate head with shower, solid surface counter top, and storage.
17. Galley with solid surface counter top, microwave, refrigerator, sink, storage, and optional electric stove top.
18. Hanging locker with easy access to 110v electric panel.
19. Wrap around cabin seating with electric hi-lo table that lowers to create a forward cabin berth.
20. Full lounge sun pad on top of cabin console w/electrically actuating backrest to convert to bench seating.
21. Large rod locker/storage compartments.
22. Multiple position Hi/Lo hydraulic table ranges from sitting flush w/cockpit sole to becoming a filler for the forward seating to full table height.
23. Wrap around forward seating w/electrically actuating electric backrests for comfort.
24. To preserve the clean lines of the foredeck, we designed the optional windlass under an easily accessible hatch with plenty of storage below for your rode and chain.



# INSPIRED DESIGN *and* ELEVATED PERFORMANCE *is in the* DETAILS.



► An optional slide-out cooler behind the helm seat keeps your favorite beverages cool and close at hand.



► You can never have enough storage and there's plenty of it aboard the 407 Panacea.



► Entering and exiting the water is a breeze with our fold-out ladder and dive door.

## STANDARD EQUIPMENT

### Construction

- Intrepid Hi-Flex White/White Gel Coat
- FRP Infused Hull, Liner, and Deck
- PVC Foam Core Construction (wood free)
- Non-Woven Quad and Uni-Directional Fibers Both Infused and Hand Laid
- Non-Skid Deck and Gunwales
- Integrated Motor Bracket for Twin or Triple Engine Configurations
- Guttered Cockpit Hatches w/Self Bailing Cockpit
- Plexi Trim Package
- Powder Coating

### Comfort

- Swing in Dive Door w/ Fold Out Ladder
- Forward Recessed Opening Deck Hatch
- Fold Under Swim Ladder
- Spacious Console w/Windshield
- Insulated Fishbox w/Thru Transom Ball Valve and Macerator
- Cabin Wrap Around Settee that Converts to Berth with Hi-Lo Table
- Private Head Compartment with Shower
- Galley Refrigerator
- Solid Surface Counter Tops
- Cabin Cushions
- Cabin/Head Skylights
- LED Cabin Lights
- EPIRB

### Mechanical

- Solid Stainless Steel Hardware
- Bow Eye
- Aluminum Fuel Tank
- Anchor Roller Thru Bow
- Heavy Duty Vinyl Rub Rail
- Tinned Wiring
- LED Navigation Lights
- LED Cockpit Lights
- Breaker Panel and Switches
- Auto Bilge Pumps (3)
- Trim Tabs w/Digital Indicators & Auto Retract
- Compass
- Pressurized Fresh Water System
- Electric Head w/Holding Tank
- Raw Water Wash-down

## OPTIONAL EQUIPMENT

### Paint

- Hull Side
- Boot Stripe
- Sheer Stripe
- Accent Stripe
- Hardtop Accent Stripe
- Custom Color Engines
- Custom Color Gel Coat

- Removable Rear Bench Seat
- Removable FRP Table
- Air Conditioning in Cabin (and or) Cockpit
- Electric Single Burner Stove
- Transom Shower
- Stainless Fender Clips
- Wood Veneer Cabinets

### Mechanical

- Towing Package includes One Piece Welded Double Tow Eye w/Addition Bilge Pump and Warning Light - Engine Covers
- Transom D-Rings
- Stainless Steel Insert for Rub Rail
- Bow Thruster
- Humphree Interceptor Plates (Triple or Twin engine only)
- Underwater Hull Lighting
- Windlass w/ 200' of Rode/15' Chain
- SS Polished Anchor
- Fresh Water Washdown for Windlass
- Generator (Diesel) w/Sound Shield
- Shore Power w/ Battery Charger and Microwave
- Built-in Battery Charger
- Additional Batteries
- Gyro Stabilizer (upgrade generator needed)
- Hot Water Heater
- Freshwater Engine Flush System
- Dockside Freshwater Inlet
- Electric Ball Valve for Fresh/Raw Water Inlet for Head
- Transom Modification for Quad Engine Application

### Comfort

- Fiberglass Hardtop with Recessed LED Lighting
- LED Multi Color Spreader Lights
- Recessed Grab Rail for Bow Seating
- Ocean Elite Helm Seat
- Cockpit Coaming Bolsters
- Premium Upholstery Packages Available
- Bed Spread and Pillow Shams
- Cabin or Cockpit Carpet
- Hardwood Flooring
- Custom Wood Table with Compass Rose Inlay
- Integrated Folding Rear Bench Seat

### Fishing

- Outriggers/Poles
- Rod Rack on Aft of Top
- Vision Baitwell Helm Seat (upgrade)
- Recirculating Baitwell in Transom Starboard Deck (with window)
- Recirculating Baitwell in Transom Port Deck (with window)
- Double Pump Baitwell System
- Sea Chest Baitwell System
- Removable Transom Baitwell
- Electric Ball Valves for Fish Box Drains
- Rod Holders in Gunwales
- Rod Holders Under Gunwales



# INTREPID CUSTOMER SERVICE. *As legendary as the boats themselves.*

When we sell an Intrepid, that is far from the end of our relationship with our customers. We love to hear from them and get their feedback for one very simple reason. We want them to be happy.

Whether it's the day they first step aboard their Intrepid or 10 years later, we go above and beyond to take care of them with the level of service they expect from us and will continue to do so.







INTREPID SALES HEADQUARTERS: 805 NE 3rd Street, Dania, Florida 33004 954-922-7544  
INTREPID MANUFACTURING FACILITY: 11700 Belcher Road South, Largo, Florida 33773 727-548-1260  
[intrepidpowerboats.com](http://intrepidpowerboats.com)

\*Specifications are subject to change without notice. Please note: Intrepid reserves the right to make changes at any time, without notice, in design, materials, colors, equipment, prices, and to discontinue models. Photographs shown are for illustration purposes only and may show items that are optional equipment, special décor or custom ordered.

